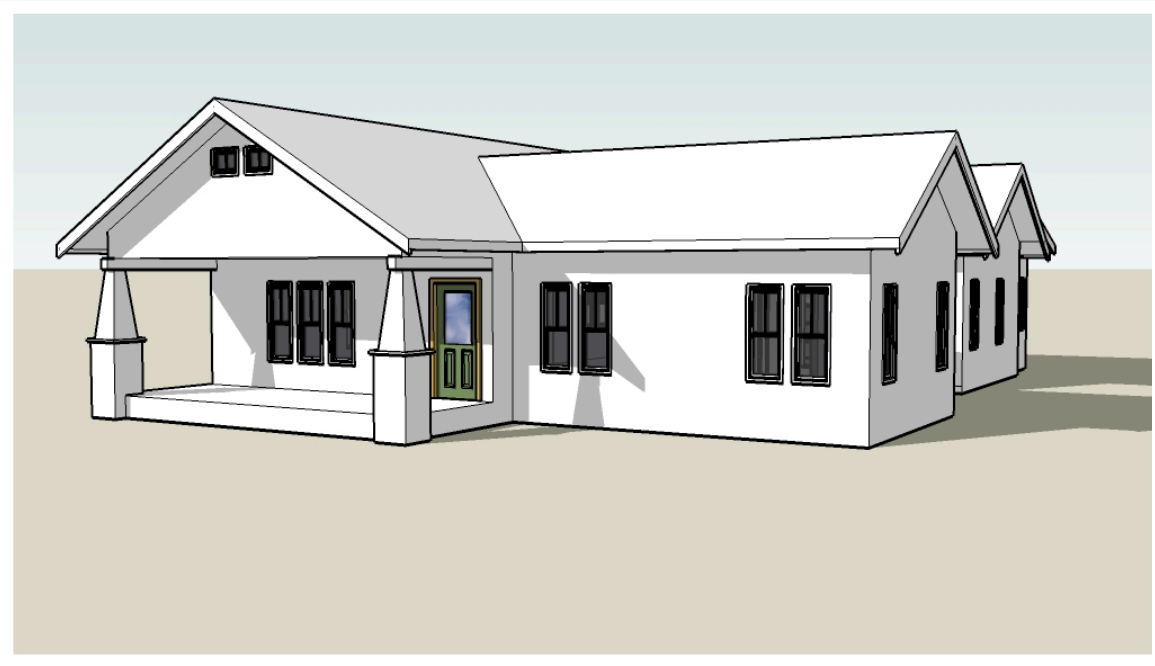


# Plan 2212

---



This ranch style home is designed for easy living around a private courtyard. A private master suite at the rear of the home opens onto the courtyard, and includes a five piece bath, and a huge walk in closet! A large light filled great room is perfect for entertaining with the adjacent open kitchen. A private guest room also opens onto the courtyard. Don't forget the large front porch!

BLUE STONE  
design group

[thebluestonedesigngroup.com](http://thebluestonedesigngroup.com)

# Plan 2212

Old Town Series

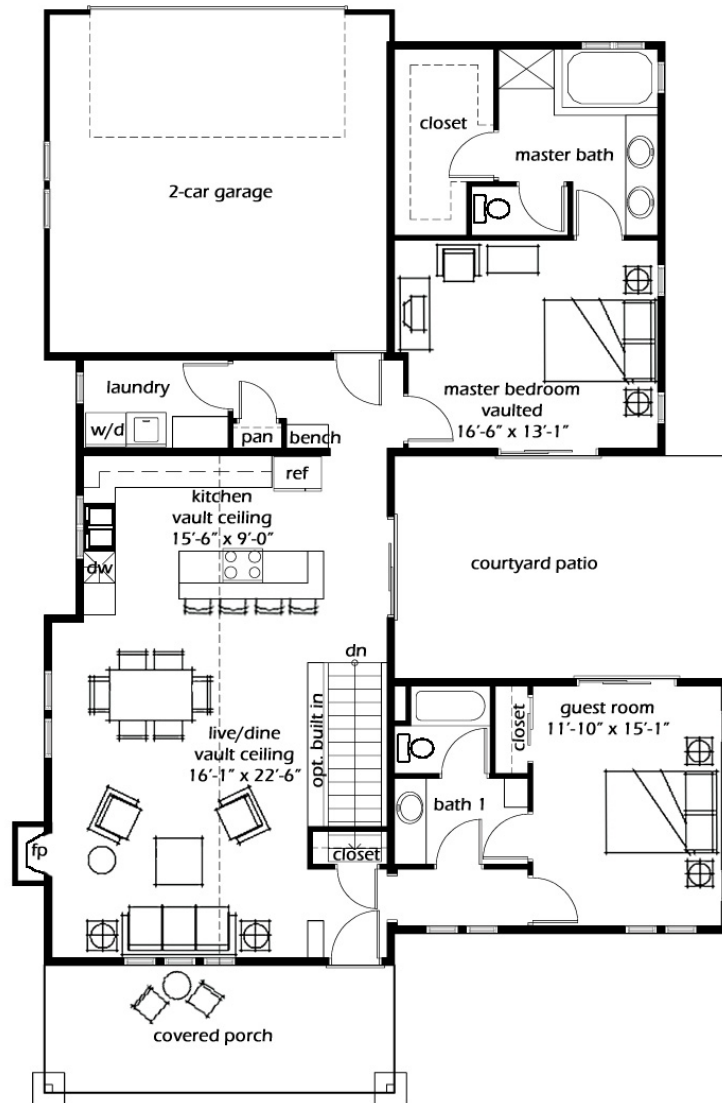
Ranch Design  
1,600 finished square feet  
9' Basement  
2 bedrooms  
2 baths  
Alley Load Attached Garage

## Design Features

Large Front Porch  
Living in Place Design  
All Interior Doorways 2'-10"  
3'-6" Wide Hallways  
Basement Construction

## Energy Features

2x6 Construction  
Energy Trusses  
2' Overhangs  
Small Footprint  
90% Efficient Furnace  
Attic Fan



**Main Level**

1,600 sq. ft.

**Preliminary**

**BLUE STONE**  
design group

thebluestonedesigngroup.com

Illustrations are artists conceptions. Dimensions and scale are approximate.  
© 2008-9 Blue Stone Design Group, LLC all rights reserved.